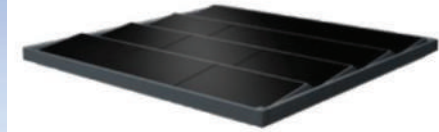
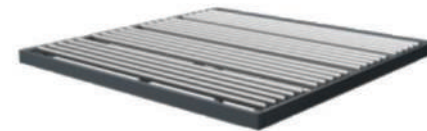




DESIGN YOUR OWN ROOF



100% PHOTOVOLTAIC
POWER GENERATION



100% BIOCLIMATIC
REGULATION OF VENTILATION
AND LIGHT FLOW



BIOVOLTAIC
BOTH!

HARMON-E 400

BIOVOLTAIC PERGOLAS
ENERGY PRODUCTION & SOLAR PROTECTION

HARMON-E 400 has a modular watertight roof.

So you can choose between an electricity-generating roof, made up of photovoltaic modules, or a bioclimatic roof that allows air and light to circulate, thanks to motorised adjustable slats. The comfort of a bioclimatic roof or the savings of a photovoltaic roof, don't choose! Opt for both by customising your roof to suit your needs.

HARMON-E 400, premium shade combined with energy efficiency!



Enhance
your home



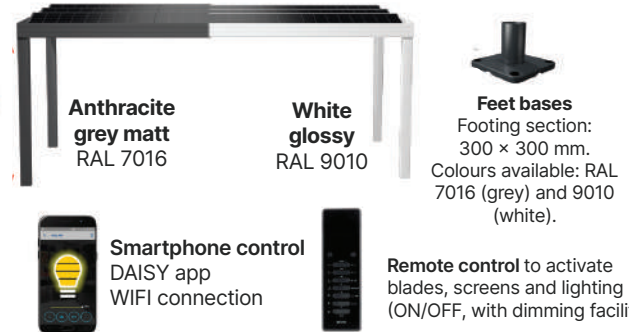
Electricity
generation



Eco-friendly

PREMIUM

STANDARD FEATURES



Versions	2x2 modules	2x3 modules	3x2 modules	4x2 modules	3x3 modules	4x3 modules
Surface (sqm)	12	17	17	22	25	33
Width (mm)	A 3109	3109	4491	5873	4491	5873
Length (mm)	B 3816	5586	3816	3816	5586	5586
Height(mm) with feet base (h : 30 mm)	C	2672 - 2972				
Foot Height(mm)	D	2400 - 3300				
Photovoltaic roof height (mm)	E	photovoltaic: 327 / adjustable slates: 347				
Foot dimensions (mm)	G	150x150				
Weight structure of 4-posts version 2400 mm (kg)	330	444	417	501	550	666
Maximum number of PV panels ⁽¹⁾	4	6	6	8	9	12
Maximum number of adjustable slates kit	2 x	2 x	3 x	4 x	2 x	2 x

Material

Structure: Aluminium 6063 T5 **Fasteners:** stainless steel A2

Colours

Powder coated structure with  Anthracite matt granulated grey - RAL 7016 White glossy - RAL 9010

Compatibility with framed photovoltaic modules

Length: 1690 to 1770 mm
 Width: 1090 to 1160 mm
 Thickness: 30 to 50 mm
 Installation conditions to be consulted on: <https://mapergolasolaire.com/supports>

OPTIONS

- **Photovoltaic modules⁽¹⁾**
- **Photovoltaic kit** (modules, inverters and cables), please contact us


Kit of adjustable blades



Peripheral Strip LED




Built-in LED spotlight



Surrounding screen



Built-in feet bases
 Footing section: 150 x 150 mm (suitable for wall installation - 2 feet)



Ceiling
 White polycarbonate plate 16 mm

